

Poster presentation

Huntington's disease: from experimental results to interaction networks, patho-pathway construction and disease hypothesis

Eduardo Gonzalez-Couto*, Silvia Matteoni, Stefano Gotta, Letizia Magnoni, Freddy Heitz, Roberto Raggiaschi, Georg C Terstappen and Andreas Kremer

Address: Siena Biotech S.p.A., Discovery Research, Siena, Italy

Email: Eduardo Gonzalez-Couto* - egcouth@sienabiotech.com

* Corresponding author

from BioSysBio 2007: Systems Biology, Bioinformatics and Synthetic Biology
Manchester, UK. 11–13 January 2007

Published: 8 May 2007

BMC Systems Biology 2007, 1(Suppl 1):P45 doi:10.1186/1752-0509-1-S1-P45

This abstract is available from: <http://www.biomedcentral.com/1752-0509/1?issue=S1>

© 2007 Gonzalez-Couto et al; licensee BioMed Central Ltd.

Background

Protein-protein interaction networks and mechanistic pathway models are excellent tools in the drug discovery process. They can be used to identify and select targets for a given disease hypothesis. Combining information from diverse sources, like in house experiments as well as literature, allows further development of interaction networks into detailed descriptions of cellular pathways. Computerized pathway diagrams allow integrating all relevant data regarding a project into one framework by linking the different data sources. Interaction networks analysis and pathway design tools are used to support target identification and validation activities. Experimental results are incorporated in protein interaction networks, analyzed and further developed into biomolecular pathopathways including literature findings to understand the underlying modulation mechanisms. The pathway diagrams are also used as communication tools, particularly for interdisciplinary project teams, thus ensuring a common understanding and facilitating critical interrogations about disease hypotheses. The analyses of experimental results, the initial construction of an HD pathopathway are presented and two mechanistic disease hypotheses are discussed.

Materials and methods

Differential proteomics experiments (DPEs) were performed on rat PC12 cells containing either wild-type or

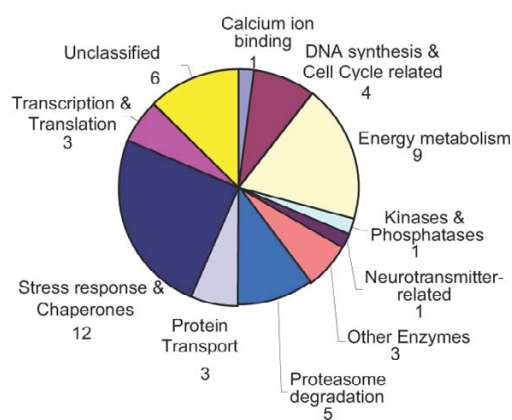


Figure 1

Functional classification by cellular process of the proteins confirmed to be modulated in the DPEs. Numeric values indicate the number of proteins in each class. The results of MS identification using partially overlapping databanks (UniProt, and rat ENSEMBL+GENSCAN) were stored in a relational database designed in-house. Redundancy was removed and the lists of genes encoding the identified proteins were mapped on networks using MetaCore <http://www.genego.com/metacore.php> for analysis. In agreement with the experimental design, the apoptosis process is not present amongst the functional classes, while the "Stress response & Chaperones", "Energy metabolism" and "Proteasome degradation" are the best represented processes in the final results set.

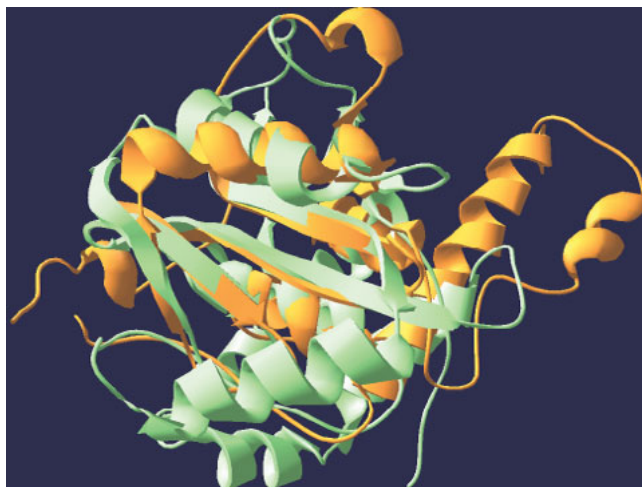


Figure 3

Common structural features of UCHL1 and of the Josephin domain of Ataxin-3. The Josephin domain of Ataxin-3 [11,12] was recently shown to initiate the aggregation of the entire protein independently of its PolyQ tract [13]. Using the Dalilite server <http://www.ebi.ac.uk/Dalilite/>, the superposition of UCHL1 (green, 2ETL) to the Josephin domain (orange, 1YZB) reveals a common core containing a large beta sheet surrounded by 3 superposed alpha helices.

therefore considered for bioinformatics analysis. Since the Ubiquitin-Proteasome system is a particularly important biological process shown to be involved in neurodegeneration [4], the focus was put on the "Proteasome degradation" (Figure 1) class for enrichment of the mechanistic HD pathophway. In this class of cellular function, the Ubiquitin Carboxyl-terminal Hydrolase isozyme L1 (UCHL1) protein was of particular interest, since it is known to be associated with Parkinson [5], Alzheimer [6], and was described as a genetic modifier of the age of onset of HD [7,8]. Since modulation of UCHL1's mRNA by PolyQ Htt was confirmed by RT-PCR (data not shown), we linked UCHL1 into our HD pathophway (Figure 2).

Divergent hypotheses can be elaborated for the role of UCHL1 in HD. First, a positive role by contributing to Ubiquitin recycling, thus maintaining normal Proteasome pathway function counteracting the accumulation of insoluble PolyQ Htt. Second, based on the recent discovery that peptide sequences can modulate the toxicity of PolyQ tracts in *cis* or *trans* [10], the transient interaction between UCHL1 and PolyQ Htt to recycle Ubiquitin could actually increase the toxicity of the extended PolyQ tract of mutant Htt by initiating the first step of the formation of aggregates. The latter mechanism can be envisaged, as UCHL1's structure can be superposed to a typical fibrillogenic domain (Figure 3).

Conclusion

DPE results were used to develop an HD pathophway including proteins modulated by PolyQ Htt expression. In this experimental result set, the proteins from the Ubiquitin-Proteasome pathway were chosen for in depth analysis, and UCHL1 was identified as a component potentially playing opposite roles in HD.

References

1. Sugars KL, Brown R, Cook LJ, Swartz J, Rubinsztein DC: **Decreased cAMP response element-mediated transcription: an early event in exon 1 and full-length cell models of Huntington's disease that contributes to polyglutamine pathogenesis.** *J Biol Chem* 2004, **279**:4988-4999.
2. Raggiaschi R, Gotta S, Terstappen GC: **Phosphoproteome analysis.** *Biosci Rep* 2005, **25**:33-44.
3. Gygi SP, Corthals GL, Zhang Y, Rochon Y, Aebersold R: **Evaluation of two-dimensional gel electrophoresis-based proteome analysis technology.** *Proc Natl Acad Sci USA* 2000, **97**:9390-9395.
4. Hol EM, Fischer DF, Ovaa H, Scheper WW: **Ubiquitin proteasome system as a pharmacological target in neurodegeneration.** *Expert Rev Neurother* 2006, **6**:1337-1347.
5. Liu Y, Fallon L, Lashuel HA, Liu Z, Lansbury PT Jr: **The UCHL1 gene encodes two opposing enzymatic activities that affect alpha-synuclein degradation and Parkinson's disease susceptibility.** *Cell* 2002, **111**:209-218.
6. Gong B, Cao Z, Zheng P, Vitolo OV, Liu S, Staniszewski A, Moolman D, Zhang H, Shelanski M, Arancio O: **Ubiquitin hydrolase UCHL1 rescues beta-amyloid-induced decreases in synaptic function and contextual memory.** *Cell* 2006, **126**:775-788.
7. Naze P, Vuillaume I, Destee A, Pasquier F, Sablonniere B: **Mutation analysis and association studies of the ubiquitin carboxy-terminal hydrolase L1 gene in Huntington's disease.** *Neurosci Lett* 2002, **328**:1-4.
8. Metzger S, Bauer P, Tomiuk J, Laccone F, Didonato S, Gellera C, Soliveri P, Lange HW, Weirich-Schwaiger H, Wenning GK, et al.: **The S18Y polymorphism in the UCHL1 gene is a genetic modifier in Huntington's disease.** *Neurogenetics* 2006, **7**:27-30.
9. Galvao R, Mendes-Soares L, Camara J, Jaco I, Carmo-Fonseca M: **Triplet repeats, RNA secondary structure and toxic gain-of-function models for pathogenesis.** *Brain Res Bull* 2001, **56**:191-201.
10. Duennwald ML, Jagadish S, Giorgini F, Muchowski PJ, Lindquist S: **A network of protein interactions determines polyglutamine toxicity.** *Proc Natl Acad Sci USA* 2006, **103**:11051-11056.
11. Nicastrò G, Menon RP, Masino L, Knowles PP, McDonald NQ, Pastore A: **The solution structure of the Josephin domain of ataxin-3: structural determinants for molecular recognition.** *Proc Natl Acad Sci USA* 2005, **102**:10493-10498.
12. Menon RP, Pastore A: **Expansion of amino acid homosequences in proteins: insights into the role of amino acid homo-polymers and of the protein context in aggregation.** *Cell Mol Life Sci* 2006, **63**:1677-1685.
13. Ellisdon AM, Thomas B, Bottomley SP: **The two-stage pathway of ataxin-3 fibrillogenesis involves a polyglutamine-independent step.** *J Biol Chem* 2006, **281**:16888-16896.